



TO: The Honorable the Members of the Board of Regents
FROM: John L. D'Agati *John L. D'Agati*
SUBJECT: Revisions to Charters Authorized by the Board of Regents
DATE: April 23, 2020
AUTHORIZATION(S): *Sharon L. Tabor*

SUMMARY

Issue for Decision

Should the Board of Regents approve the proposed revisions to the charters of the following schools authorized by the Board of Regents?

1. **Brooklyn Laboratory Charter School** (reduce the authorized enrollment from 909 students to 770 students beginning in the 2020-2021 school year).
2. **Edmund W. Gordon Brooklyn Laboratory Charter School** (reduce the authorized enrollment from 799 students to 460 students beginning in the 2020-2021 school year).

Reason(s) for Consideration

Required by State statute.

Proposed Handling

This issue will come before the Full Board for action at its May 2020 meeting.

Procedural History

The New York State Education Department (the Department) is making recommendations to the Board of Regents for approval and issuance of charter revisions as required by Article 56 of the Education Law.

Background Information

The Department recommends that the Board of Regents amend the charters of the **Brooklyn Laboratory Charter School** and **Edmund W. Gordon Brooklyn Laboratory Charter School**. Information about the revision requests is provided below.

Related Regents Items

Brooklyn Laboratory Charter School

[December 2013 Initial Charter](http://www.regents.nysed.gov/common/regents/files/1213p12a2%5B1%5D.pdf)

(<http://www.regents.nysed.gov/common/regents/files/1213p12a2%5B1%5D.pdf>)

[March 2017 Merger, and Enrollment and Grade Expansion Revision](http://www.regents.nysed.gov/common/regents/files/317p12a6.pdf)

(<http://www.regents.nysed.gov/common/regents/files/317p12a6.pdf>)

[March 2018 Enrollment Decrease Revision](http://www.regents.nysed.gov/common/regents/files/318p12a4.pdf)

(<http://www.regents.nysed.gov/common/regents/files/318p12a4.pdf>)

[April 2019 First Renewal, and Enrollment and Grade Expansion Revision](http://www.regents.nysed.gov/common/regents/files/419p12a1.pdf)

(<http://www.regents.nysed.gov/common/regents/files/419p12a1.pdf>)

Edmund W. Gordon Brooklyn Laboratory Charter School

(formerly known as Brooklyn Laboratory Charter High School)

[June 2016 Initial Charter](http://www.regents.nysed.gov/common/regents/files/616p12a2.pdf)

(<http://www.regents.nysed.gov/common/regents/files/616p12a2.pdf>)

[March 2017 Merger Revision](http://www.regents.nysed.gov/common/regents/files/317p12a6.pdf)

(<http://www.regents.nysed.gov/common/regents/files/317p12a6.pdf>)

[March 2018 Name Change and Grade Expansion Revision](http://www.regents.nysed.gov/common/regents/files/318p12a4.pdf)

(<http://www.regents.nysed.gov/common/regents/files/318p12a4.pdf>)

Recommendations

It is recommended that the Board of Regents take the following action:

VOTED: That the Board of Regents finds that: (1) the charter school meets the requirements set out in Article 56 of the Education Law, and all other applicable laws, rules and regulations; (2) the charter school can demonstrate the ability to operate in an educationally and fiscally sound manner; (3) granting the request to amend the charter is likely to improve student learning and achievement and materially further the purposes set out in subdivision two of section twenty-eight hundred fifty of Article 56 of the Education Law; and (4) granting the request to amend the charter will have a significant educational benefit

to the students expected to attend the charter school, and the Board of Regents therefore approves the charter revision for **Brooklyn Laboratory Charter School** and amends the provisional charter accordingly.

VOTED: That the Board of Regents finds that: (1) the charter school meets the requirements set out in Article 56 of the Education Law, and all other applicable laws, rules and regulations; (2) the charter school can demonstrate the ability to operate in an educationally and fiscally sound manner; (3) granting the request to amend the charter is likely to improve student learning and achievement and materially further the purposes set out in subdivision two of section twenty-eight hundred fifty of Article 56 of the Education Law; and (4) granting the request to amend the charter will have a significant educational benefit to the students expected to attend the charter school, and the Board of Regents therefore approves the charter revision for **Edmund W. Gordon Brooklyn Laboratory Charter School** and amends the provisional charter accordingly.

Timetable for Implementation

The Regents action for **Brooklyn Laboratory Charter School** and **Edmund W. Gordon Brooklyn Laboratory Charter School** will become effective immediately.

Brooklyn Laboratory Charter School

Table 1: School Summary

Name of Charter School	Brooklyn Laboratory Charter School
Board Chair	Mickey Revenaugh
District of Location	NYC CSD 13
Opening Month/Year	Fall 2014
Current Charter Term	July 1, 2019 - June 30, 2022
Comprehensive Management Service Provider	None
Current Maximum Approved Grade Levels/ Number of Students	Grades 6-12/909 students
Mission	<i>“Brooklyn Laboratory Charter School (BLCS) prepares students, including English Language learners, students with disabilities, and over-age under-credited students, with the academic foundation, digital literacy, and leadership skills necessary to excel in college and professional life as they grow as ethical leaders.”</i>
Proposed Revisions	To reduce the authorized enrollment from 909 students to 770 students beginning in the 2020-2021 school year

In December 2013, the Board of Regents approved and chartered the Brooklyn Laboratory Charter School (BLCS) in the New York City Community School District 13 (NYC CSD 13). BLCS’ educational program focuses on implementing an academic model designed to ensure that students graduate having mastered the NYS Learning Standards, equipped with the knowledge and skills needed to graduate from a selective four-year college or university. To support success, the school provides a college preparatory curriculum with a focus on literacy and will embrace next generation, data-driven assessment, and personalized instruction to identify and meet the diverse needs of students.

The school’s trustees request that the Board of Regents approve a material revision to the school’s charter to allow the school to decrease its authorized enrollment from 909 students to 770 students beginning in the 2020-2021 school year. This revision would allow the school to slow the pace of growth by lowering student enrollment. The board believes that by serving fewer students, it will put the school in the best position to support all students and strengthen the organizational performance in the areas of educational success, organizational soundness, and faithfulness to the charter and law.

Table 2: Brooklyn Laboratory Charter School Approved Enrollment For the Current Charter Term

	Year 1 2019-2020	Year 2 2020-2021	Year 3 2021-2022
Grade Configuration	Grades 6 - 11	Grades 6 - 12	Grades 6 - 12
Total Approved Enrollment	607	909	909

***Table 3: Brooklyn Laboratory Charter School Proposed Enrollment**

	Year 1 2019-2020	Year 2 2020-2021	Year 3 2021-2022
Grade Configuration	Grades 6 - 11	Grades 6 - 12	Grades 6 - 12
Total Proposed Enrollment	607	710	770

*The proposed chart was submitted by the Brooklyn Laboratory Charter School. It is subject to change pending the final revision recommendation and approval by the Board of Regents.

Figure 1a: Brooklyn Laboratory CS Academic Achievement Elementary/Middle School Assessment Proficiency State and District Differentials Over Time Comparison to NYC CSD 13

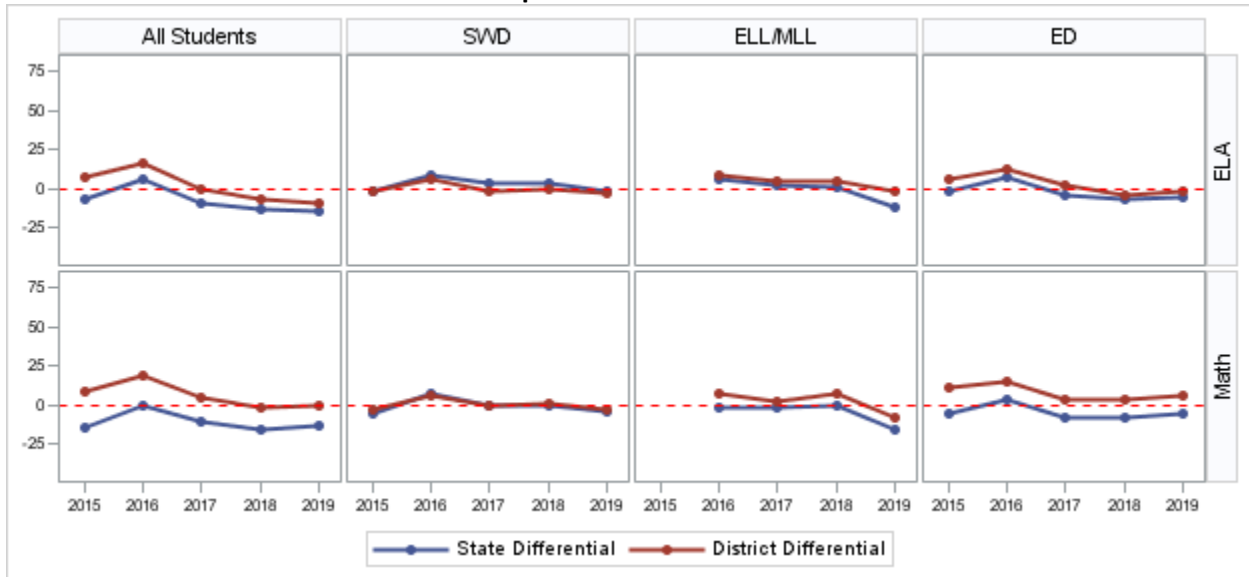
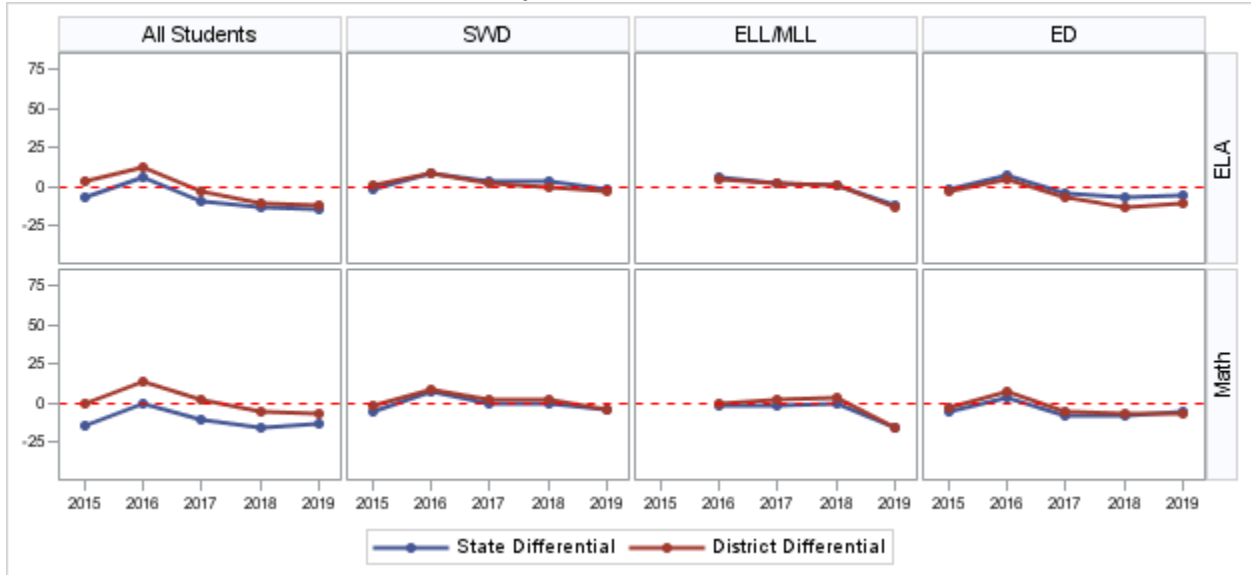


Figure 1b: Brooklyn Laboratory CS Academic Achievement Elementary/Middle School Assessment Proficiency State and District Differentials Over Time Comparison to NYC CSD 17



**Table 4a: Brooklyn Laboratory CS Academic Achievement
Elementary/Middle School Assessment Proficiency Outcomes: Charter School, District and NYS**

		ELA					Math				
		Brooklyn Laboratory CS	NYC CSD 13	Differential to District	NYS	Differential to NYS	Brooklyn Laboratory CS	NYC CSD 13	Differential to District	NYS	Differential to NYS
All Students	2014-2015	25%	18%	+7	31%	-6	25%	16%	+9	39%	-14
	2015-2016	41%	25%	+16	35%	+6	38%	19%	+19	38%	0
	2016-2017	31%	31%	0	40%	-9	23%	18%	+5	34%	-11
	2017-2018	33%	40%	-7	46%	-13	25%	26%	-1	40%	-15
	2018-2019	31%	40%	-9	45%	-14	29%	29%	0	42%	-13
SWD	2014-2015	5%	6%	-1	6%	-1	5%	8%	-3	10%	-5
	2015-2016	16%	10%	+6	7%	+9	17%	11%	+6	9%	+8
	2016-2017	13%	14%	-1	10%	+3	9%	9%	0	9%	0
	2017-2018	17%	17%	0	14%	+3	12%	11%	+1	12%	0
	2018-2019	12%	15%	-3	13%	-1	9%	12%	-3	13%	-4
ELL/MLL	2015-2016	14%	5%	+9	8%	+6	14%	7%	+7	15%	-1
	2016-2017	10%	5%	+5	8%	+2	10%	8%	+2	12%	-2
	2017-2018	21%	16%	+5	20%	+1	21%	13%	+8	21%	0
	2018-2019	7%	9%	-2	19%	-12	7%	15%	-8	23%	-16
ED	2014-2015	19%	13%	+6	20%	-1	22%	11%	+11	27%	-5
	2015-2016	32%	19%	+13	25%	+7	30%	15%	+15	27%	+3
	2016-2017	26%	24%	+2	30%	-4	16%	12%	+4	24%	-8
	2017-2018	29%	33%	-4	36%	-7	22%	19%	+3	30%	-8
	2018-2019	30%	31%	-1	35%	-5	28%	22%	+6	33%	-5

**Table 4b: Brooklyn Laboratory CS Academic Achievement
Elementary/Middle School Assessment Proficiency Outcomes: Charter School, District and NYS**

		ELA					Math				
		Brooklyn Laboratory CS	NYC CSD 17	Differential to District	NYS	Differential to NYS	Brooklyn Laboratory CS	NYC CSD 17	Differential to District	NYS	Differential to NYS
All Students	2014-2015	25%	22%	+3	31%	-6	25%	25%	0	39%	-14
	2015-2016	41%	28%	+13	35%	+6	38%	24%	+14	38%	0
	2016-2017	31%	34%	-3	40%	-9	23%	21%	+2	34%	-11
	2017-2018	33%	43%	-10	46%	-13	25%	30%	-5	40%	-15
	2018-2019	31%	43%	-12	45%	-14	29%	35%	-6	42%	-13
SWD	2014-2015	5%	4%	+1	6%	-1	5%	6%	-1	10%	-5
	2015-2016	16%	7%	+9	7%	+9	17%	8%	+9	9%	+8
	2016-2017	13%	11%	+2	10%	+3	9%	7%	+2	9%	0
	2017-2018	17%	17%	0	14%	+3	12%	10%	+2	12%	0
	2018-2019	12%	15%	-3	13%	-1	9%	13%	-4	13%	-4
ELL/MLL	2015-2016	14%	9%	+5	8%	+6	14%	14%	0	15%	-1
	2016-2017	10%	8%	+2	8%	+2	10%	8%	+2	12%	-2
	2017-2018	21%	20%	+1	20%	+1	21%	17%	+4	21%	0
	2018-2019	7%	20%	-13	19%	-12	7%	23%	-16	23%	-16
ED	2014-2015	19%	22%	-3	20%	-1	22%	25%	-3	27%	-5
	2015-2016	32%	27%	+5	25%	+7	30%	23%	+7	27%	+3
	2016-2017	26%	33%	-7	30%	-4	16%	21%	-5	24%	-8
	2017-2018	29%	42%	-13	36%	-7	22%	29%	-7	30%	-8
	2018-2019	30%	41%	-11	35%	-5	28%	34%	-6	33%	-5

**Table 5a: Brooklyn Laboratory CS Demographics
Compared to NYC CSD 13**

	SWD			ELL/MLL			ED		
	Brooklyn Laboratory CS	NYC CSD 13	Differential to District	Brooklyn Laboratory CS	NYC CSD 13	Differential to District	Brooklyn Laboratory CS	NYC CSD 13	Differential to District
2015-2016	25%	27%	-2	2%	8%	-6	51%	74%	-23
2016-2017	29%	27%	+2	2%	7%	-5	65%	72%	-7
2017-2018	31%	20%	+11	3%	8%	-5	70%	73%	-3
2018-2019	32%	16%	+16	3%	7%	-4	98%	71%	+27

**Table 5b: Brooklyn Laboratory CS Demographics
Compared to NYC CSD 17**

	SWD			ELL/MLL			ED		
	Brooklyn Laboratory CS	NYC CSD 17	Differential to District	Brooklyn Laboratory CS	NYC CSD 17	Differential to District	Brooklyn Laboratory CS	NYC CSD 17	Differential to District
2015-2016	25%	21%	+4	2%	11%	-9	51%	78%	-27
2016-2017	29%	20%	+9	2%	10%	-8	65%	78%	-13
2017-2018	31%	22%	+9	3%	14%	-11	70%	84%	-14
2018-2019	32%	20%	+12	3%	13%	-10	98%	81%	+17

**Table 6a: Retention – Aggregate and Subgroups
Compared to NYC CSD 13**

	All Students			SWD			ELL/MLL			ED		
	Brooklyn Laboratory Charter School	NYC CSD 13	Differential to District	Brooklyn Laboratory Charter School	NYC CSD 13	Differential to District	Brooklyn Laboratory Charter School	NYC CSD 13	Differential to District	Brooklyn Laboratory Charter School	NYC CSD 13	Differential to District
2016-2017	83%	86%	-3	84%	87%	-3	83%	85%	-2	81%	87%	-6
2017-2018	71%	68%	+3	72%	71%	+1	90%	62%	+28	72%	71%	1
2018-2019	71%	83%	-12	72%	75%	-3	88%	79%	+9	72%	81%	-9

**Table 6b: Retention – Aggregate and Subgroups
Compared to NYC CSD 17**

	All Students			SWD			ELL/MLL			ED		
	Brooklyn Laboratory Charter School	NYC CSD 17	Differential to District	Brooklyn Laboratory Charter School	NYC CSD 17	Differential to District	Brooklyn Laboratory Charter School	NYC CSD 17	Differential to District	Brooklyn Laboratory Charter School	NYC CSD 17	Differential to District
2016-2017	83%	88%	-5	84%	88%	-4	83%	87%	-4	81%	89%	-8
2017-2018	71%	69%	+2	72%	70%	+2	90%	69%	+21	72%	70%	2
2018-2019	71%	75%	-4	72%	71%	+1	88%	72%	+16	72%	74%	-2

Summary of Public Comment

The required public hearing was held by the New York City Department of Education on April 20, 2020. Twenty people attended and six spoke. Five were in favor of the revision, a representative of the school’s community school district of location stated that they were not in opposition, and none were opposed.

Edmund W. Gordon Brooklyn Laboratory Charter School

Table 1: School Summary

Name of Charter School	Edmund W. Gordon Brooklyn Laboratory Charter School
Board Chair	Mickey Revenaugh
District of Location	NYC CSD 13
Opening Month/Year	Fall 2018
Current Charter Term	July 1, 2018 – June 30, 2023
Comprehensive Management Service Provider	None
Current Maximum Approved Grade Levels/ Number of Students	Grades 6-12/ 799 students
Mission	<i>“Edmund W. Gordon Brooklyn Laboratory Charter School (EWGBLCS) prepares students— including students with disabilities, English language learners, and over-age under-credited students—with the academic, applied science, and leadership skills necessary to excel in college and professional life as they grow as ethical leaders.”</i>
Proposed Revisions	To reduce the authorized enrollment from 799 students to 460 students beginning in the 2020-2021 school year

In June 2016, the Board of Regents approved and chartered the Edmund W. Gordon Brooklyn Laboratory Charter School (EWGBLCS) in the New York City Community School District 13 (NYC CSD 13). The School’s educational program focuses on meeting the needs of all students regardless of their academic level, English language proficiency, or disability status by implementing an academic model designed to ensure that all students graduate having mastered the NYS Learning Standards, equipped with the knowledge and skills needed to graduate from a selective four-year college or university.

The school’s trustees request that the Board of Regents approve a material revision to the school’s charter to allow the school to decrease its authorized enrollment from 799 students to 460 students beginning in the 2020-2021 school year. This revision would allow the school to slow the pace of growth by lowering student enrollment. The board believes that by serving fewer students, it will put the school in the best position to support all students and strengthen the organizational performance in the areas of educational success, organizational soundness, and faithfulness to the charter and law.

**Table 2: Edmund W. Gordon Brooklyn Laboratory Charter School
Approved Enrollment for the Current Charter Term**

	Year 1 2018-2019	Year 2 2019-2020	Year 3 2020-2021	Year 4 2021-2022	Year 5 2022-2023
Grade Configuration	Grade 6	Grades 6-7,9	Grades 6 - 10	Grades 6 - 11	Grades 6 - 12
Total Approved Enrollment	90	249	510	695	799

***Table 3: Edmund W. Gordon Brooklyn Laboratory Charter School Proposed Enrollment**

	Year 1 2018-2019	Year 2 2019-2020	Year 3 2020-2021	Year 4 2021-2022	Year 5 2022-2023
Grade Configuration	Grade 6	Grades 6-7,9	Grades 6 - 10	Grades 6 - 11	Grades 6 - 12
Total Proposed Enrollment	90	249	360	415	460

*The proposed chart was submitted by the Edmund W. Gordon Brooklyn Laboratory Charter School. It is subject to change pending the final revision recommendation and approval by the Board of Regents.

Figure 1: Edmund W Gordon Brooklyn Laboratory CS Academic Achievement Elementary/Middle School Assessment Proficiency State and District Differentials Over Time

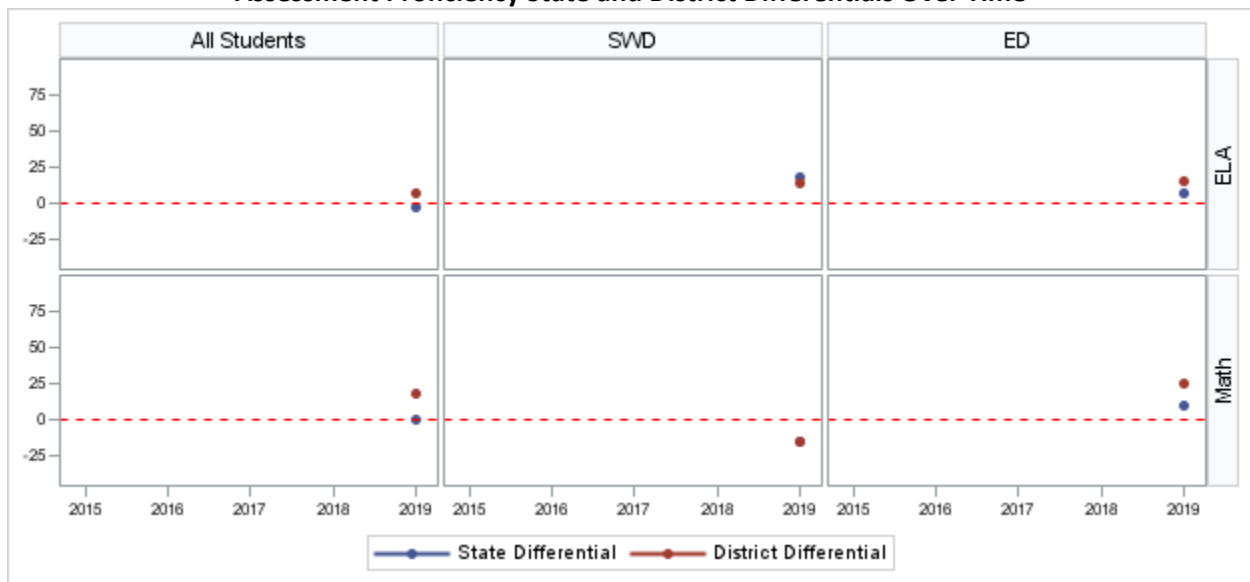


Table 4: Edmund W. Gordon Brooklyn Laboratory Charter School Academic Achievement Elementary/Middle School Assessment Proficiency Outcomes: Charter School, District and NYS

		ELA					Math				
		Edmund W Gordon Brooklyn Laboratory CS	NYC CSD 13	Differential to District	NYS	Differential to NYS	Edmund W Gordon Brooklyn Laboratory CS	NYC CSD 13	Differential to District	NYS	Differential to NYS
All Students	2018-2019	45%	38%	+7	47%	-2	47%	29%	+18	47%	0
SWD	2018-2019	33%	19%	+14	15%	+18	0%	15%	-15	15%	-15
ED	2018-2019	44%	28%	+16	37%	+7	46%	21%	+25	36%	+10

**Table 5: Edmund W. Gordon Brooklyn Laboratory Charter School
Demographics Compared to NYC CSD 13**

	SWD			ELL/MLL			ED		
	Edmund W Gordon Brooklyn Laboratory CS	NYC CSD 13	Differential to District	Edmund W Gordon Brooklyn Laboratory CS	NYC CSD 13	Differential to District	Edmund W Gordon Brooklyn Laboratory CS	NYC CSD 13	Differential to District
2018-2019	14%	27%	-13	4%	7%	-3	98%	74%	+24

Summary of Public Comment

The required public hearing was held by the New York City Department of Education on April 20, 2020. Twenty people attended and six spoke. Five were in favor of the revision, a representative of the school’s community school district of location stated that they were not in opposition, and none were opposed.