



**TO:** P-12 Education Committee

**FROM:** Angelique Johnson-Dingle *Angelique Johnson-Dingle*

**SUBJECT:** Renewal Recommendation for a Charter School Authorized by the New York City Department of Education

**DATE:** March 2, 2023

**AUTHORIZATION(S):** *Betty M...*

### SUMMARY

#### **Issue for Decision**

Should the Board of Regents approve the proposed renewal charter for the following charter school authorized by the Chancellor of the New York City Department of Education pursuant to Article 56 of the Education Law (the New York Charter Schools Act)?

**Bedford Stuyvesant New Beginnings Charter School** (Five-year renewal and revision to increase grade span and enrollment from K-8 with 729 students to K-12 with 1269 students over the course of the charter term and adoption of co-leadership model).

#### **Reason(s) for Consideration**

Required by State statute.

#### **Proposed Handling**

This issue will come before the P-12 Education Committee and the Full Board for action at its March 2023 meeting.

#### **Procedural History**

The Chancellor of the New York City Department of Education made the renewal recommendations being presented to the Board of Regents for approval and issuance as required by Article 56 of the Education Law.

## **Background Information**

The New York City Department of Education Chancellor is bound by Article 56 of the Education law regarding the criteria that can be considered in decision making pertaining to charter school renewals and revisions.

## **Related Regents Items**

### **Bedford Stuyvesant New Beginnings Charter School**

January 2010: [Initial Charter](http://www.regents.nysed.gov/Summaries/0110summary.htm)  
(<http://www.regents.nysed.gov/Summaries/0110summary.htm>)

January 2015: [First Renewal](http://www.regents.nysed.gov/common/regents/files/meetings/215bra2.pdf)  
(<http://www.regents.nysed.gov/common/regents/files/meetings/215bra2.pdf>)

March 2018: [Second Renewal](https://www.regents.nysed.gov/common/regents/files/318p12a3revised.pdf)  
(<https://www.regents.nysed.gov/common/regents/files/318p12a3revised.pdf>)

## **Recommendation**

It is recommended that the Board of Regents take the following action(s):

VOTED: That the Board of Regents finds that **Bedford Stuyvesant New Beginnings Charter School**: (1) meets the requirements set out in Article 56 of the Education Law, and all other applicable laws, rules and regulations; (2) the applicant can demonstrate the ability to operate the school in an educationally and fiscally sound manner; (3) granting the application is likely to improve student learning and achievement and materially further the purposes set out in subdivision two of section twenty-eight hundred fifty of this article; and (4) granting the application would have a significant educational benefit to the students expected to attend the charter school, and the Board of Regents therefore approves the renewal application of **Bedford Stuyvesant New Beginnings Charter School** as proposed by the Chancellor of the New York City Department of Education, and that a renewal charter be issued, and that its provisional charter be extended for a term up through and including **June 30, 2028**.

## **Timetable for Implementation**

The Regents action for the above-named charter school will become effective immediately.

## Bedford Stuyvesant New Beginnings Charter School

**Table 1: Charter School Summary**

<b>Name of Charter School</b>	Bedford Stuyvesant New Beginnings Charter School
<b>Board Chair</b>	Victor Rivera
<b>District of Location</b>	NYC CSD 16 <sup>1</sup>
<b>Initial Commencement of Instruction</b>	Fall 2010
<b>Charter Term(s)</b>	<ul style="list-style-type: none"> <li>• Initial Charter Term: 01/12/2010 - 01/11/2015</li> <li>• First Renewal: 01/12/2015 – 06/30/2018</li> <li>• Second Renewal: 07/01/2018 – 06/30/23</li> </ul>
<b>Comprehensive Management Service Provider</b>	None
<b>Facilities</b>	82 Lewis Avenue, Brooklyn NY, 11206 - Private Space
<b>Innovative and Noteworthy Programs</b>	<ul style="list-style-type: none"> <li>• Extended school day and school year</li> <li>• Afterschool program until 6 PM for all students</li> </ul>
<b>Recommended Material Revisions</b>	Increase grade span and enrollment from K-8 with 729 students to K-12 with 1269 students over the course of the charter term and adoption of co-leadership model

**Table 2: Current Grade Levels and Authorized Enrollment**

	<b>Year 1 2018 to 2019</b>	<b>Year 2 2019 to 2020</b>	<b>Year 3 2020 to 2021</b>	<b>Year 4 2021 to 2022</b>	<b>Year 5 2022 to 2023</b>
<b>Grade Configuration</b>	K – Grade 8	K – Grade 8	K – Grade 8	K – Grade 8	K – Grade 8
<b>Total Authorized Enrollment</b>	729	729	729	729	729

**Table 3: Recommended Renewal Term Grade Levels and Recommended Enrollment**

	<b>Year 1 2023 to 2024</b>	<b>Year 2 2024 to 2025</b>	<b>Year 3 2025 to 2026</b>	<b>Year 4 2026 to 2027</b>	<b>Year 5 2027 to 2028</b>
<b>Grade Configuration</b>	K – Grade 8	K – Grade 9	K – Grade 10	K – Grade 11	K – Grade 12
<b>Total Recommended Enrollment</b>	729	864	999	1134	1269

<sup>1</sup> Twenty-five percent of all students residing in this district attend charter schools.

## **Rationale for Renewal and Revision Recommendation**

In accordance with Education Law, Article 56, Sections 2851(4) and 2852(2), the Chancellor of the New York City Department of Education (NYCDOE) recommends that the Board of Regents grant the renewal term and revision described above in the **Issue for Decision** section, for the following reasons.

### **Renewal:**

During the current charter term, the school has compiled a strong and compelling record of academic success, and at the time of the renewal analysis, has substantially met most other standards set forth in the NYCDOE Charter School Accountability Framework.

Because the total enrollment of resident students attending charter schools in the district is greater than 5 percent of the total public school enrollment, pursuant to Education Law Section 2852(2)(d), NYCDOE asserts that granting this renewal application provides a significant educational benefit to the students attending and expected to attend this charter school.

### **Material Revision(s):**

Approving these revision requests is likely to improve student learning and achievement as the academic record of the school is strong and the school is fully enrolled. The adoption of a co-leadership model will allow the school to operate at two separate sites most efficiently.

## **Bedford Stuyvesant New Beginnings Charter School**

### **Monitoring and Oversight:**

- During the school's current charter term, the NYCDOE conducted the following site visits:
  - Year 4 (2021-2022): Annual Comprehensive Review (ACR) visit
  - Year 5 (2022-2023): Renewal Visit
- The school did not receive a Notice of Concern or Notice of Deficiency during the charter term.

## **Summary of Evidence for Renewal**

The school's proficiency rates (for both English language arts and Math, in the aggregate as well as for special populations) have been on an upward trajectory throughout its current charter term and through the pandemic, exceeding statewide proficiency rates. Bedford Stuyvesant New Beginnings Charter School (BSNBCS) maintains a robust interim assessment program that allows the school to meet each student where he/she is. The school prioritizes a positive behavior intervention and supports (PBIS) approach. Additionally, the school has made a strong commitment to Project Based Learning through its Brooklyn to Alaska Partnership for youth leadership, the 82 News video student journalism program and its Civil Rights Practicum experiences in San Diego, CA and Jackson, MS participating in Freedom 60, a movement celebrating the original 1961 Freedom Riders.

## Essential Question 1: Is the school an academic success?

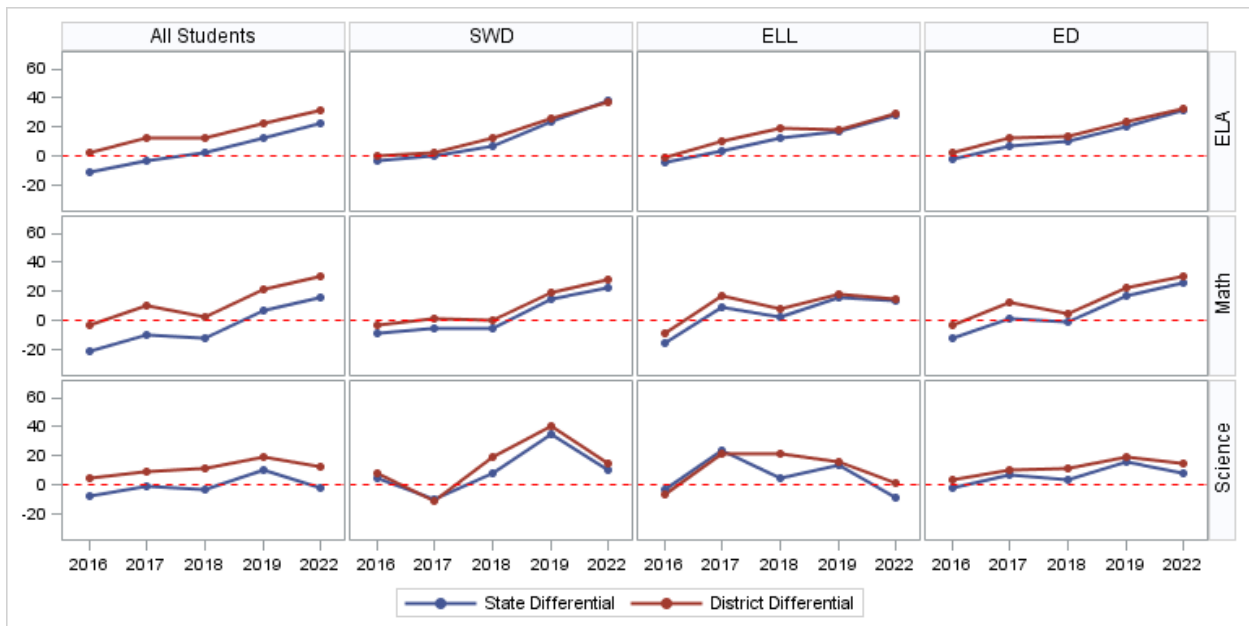
### **Student Performance – Elementary/Middle School Outcomes**

See Table 4 below regarding 3-8 math and English language arts (ELA) exam aggregate and subgroup student performance compared to the district and State average, through 2021-2022.

**Academic Program:** Bedford Stuyvesant New Beginnings Charter School offers curricula and coursework aligned to New York State Next Generation learning standards in ELA, math, social studies and science. The school offers the Algebra I and Living Environment Regents Exams to 8<sup>th</sup> grade students. Bedford Stuyvesant New Beginnings Charter School offers curricula and coursework that supports all through its co-teaching model, which typically includes two to three instructors per classroom to support student learning utilizing integrated co-teaching strategies (e.g., mini-lessons, parallel instruction, small group break-outs, structured enrichment activities) each day. The mathematics program utilizes Cognitively Guided Instruction and student-centered learning strategies, and the ELA program combines both explicit instruction, and small group opportunities to ensure students have multiple avenues to engage with the academic content.

**Academic Program for students with disabilities and English language learners (ELL):** BSNBCS invests in Response-to-Intervention coordinators who work closely with grade-level Professional Learning Communities to evaluate student needs and identify students who are experiencing academic challenges. The school offers Integrated Co-Teaching (ICT) for all grades. All students with disabilities receive their special education services in the least restrictive environment possible, including students who require a full complement of counseling, speech and language services, physical therapy and occupational therapy to support their learning. ELL students receive push-in and small group language services to support their English acquisition.

**Figure 1: Elementary/Middle School Assessment Proficiency State and District Differentials Over Time Comparison to NYC CSD 16**



**Table 4: Elementary/Middle School Assessment Proficiency Outcomes**

		ELA					Math				
		Bedford Stuyvesant New Beginnings CS	NYC CSD 16	District Differential	NYS	NYS Differential	Bedford Stuyvesant New Beginnings CS	NYC CSD 16	District Differential	NYS	NYS Differential
All Students	2015-2016	27%	25%	+2	38%	-11	18%	21%	-3	39%	-21
	2016-2017	37%	25%	+12	40%	-3	30%	20%	+10	40%	-10
	2017-2018	47%	34%	+13	45%	+2	33%	30%	+3	45%	-12
	2018-2019	58%	35%	+23	45%	+13	54%	32%	+22	47%	+7
	2021-2022	70%	38%	+32	47%	+23	55%	25%	+30	39%	+16
SWD	2015-2016	6%	6%	0	9%	-3	4%	7%	-3	13%	-9
	2016-2017	11%	9%	+2	11%	0	9%	8%	+1	14%	-5
	2017-2018	24%	12%	+12	17%	+7	13%	13%	0	18%	-5
	2018-2019	39%	13%	+26	15%	+24	33%	14%	+19	18%	+15
	2021-2022	54%	17%	+37	16%	+38	37%	9%	+28	14%	+23
ELL	2015-2016	9%	10%	-1	13%	-4	4%	13%	-9	20%	-16
	2016-2017	16%	6%	+10	12%	+4	28%	11%	+17	19%	+9
	2017-2018	37%	18%	+19	25%	+12	31%	23%	+8	29%	+2
	2018-2019	42%	24%	+18	25%	+17	47%	29%	+18	31%	+16
	2021-2022	57%	28%	+29	29%	+28	39%	24%	+15	25%	+14
ED	2015-2016	26%	23%	+3	28%	-2	16%	19%	-3	28%	-12
	2016-2017	37%	24%	+13	30%	+7	30%	18%	+12	29%	+1
	2017-2018	46%	32%	+14	36%	+10	33%	28%	+5	34%	-1
	2018-2019	56%	32%	+24	36%	+20	54%	31%	+23	37%	+17
	2021-2022	69%	36%	+33	37%	+32	54%	23%	+31	28%	+26

**Essential Question 2: Is the school effective and well run?**

**Use of Data/ Ability to Monitor Progress**

BSNBCS trustees, leadership and staff members use data driven frameworks, tools and processes to inform decision making. The school uses i-Ready’s online diagnostic and instruction program to identify and target student needs in grades 3-8. The academic program is guided by the use of regular assessments leading to the revision of pacing guides and lesson design to maintain an effective program for all learners. This information is shared regularly with parents via the school’s communication platforms to ensure parents are aware of how their student is learning and growing.

## Enrollment, Recruitment, and Retention

The school is currently meeting the target (85%) for aggregate enrollment (see Table 5 below).

**Table 5: Aggregate Enrollment: Reported vs Contracted**

Bedford Stuyvesant New Beginnings CS	Contracted Enrollment	Reported Enrollment	Percent of Contracted Enrollment
2017-2018	729	678	93%
2018-2019	729	702	96%
2019-2020	729	717	98%
2020-2021	729	721	99%
2021-2022	729	719	99%
2022-2023	729	739	101%

The school is exceeding targets for enrollment of ELL and economically disadvantaged (ED) students. The school is within target range (within 10 percentage points) for enrollment of Students with Disabilities (SWD). The school has a lottery preference for SWD.

The school is exceeding all retention targets for aggregate retention (see Table 7 below).

**Table 6: Subgroup Enrollment: Students with Disabilities, English Language Learners, and Economically Disadvantaged**

	SWD			ELL			ED		
	Bedford Stuyvesant New Beginnings CS	NYC CSD 16	Differential to District	Bedford Stuyvesant New Beginnings CS	NYC CSD 16	Differential to District	Bedford Stuyvesant New Beginnings CS	NYC CSD 16	Differential to District
2017-2018	21%	29%	-8	17%	7%	+10	95%	88%	+7
2018-2019	21%	33%	-12	18%	8%	+10	92%	86%	+6
2019-2020	21%	33%	-12	20%	8%	+12	94%	86%	+8
2020-2021	24%	32%	-8	22%	8%	+14	96%	87%	+9
2021-2022	24%	32%	-8	26%	9%	+17	96%	84%	+12

**Table 7: Student Retention – Aggregate and Subgroup**

	All Students			SWD			ELL			ED		
	Bedford Stuyvesant New Beginnings CS	NYC CSD 16	Differential to District	Bedford Stuyvesant New Beginnings CS	NYC CSD 16	Differential to District	Bedford Stuyvesant New Beginnings CS	NYC CSD 16	Differential to District	Bedford Stuyvesant New Beginnings CS	NYC CSD 16	Differential to District
2017-2018	77%	76%	+1	76%	79%	-3	84%	75%	+9	77%	76%	+1
2018-2019	81%	77%	+4	76%	79%	-3	76%	78%	-2	81%	77%	+4
2019-2020	83%	77%	+6	71%	78%	-7	88%	79%	+9	83%	77%	+6
2020-2021	91%	82%	+9	95%	84%	+11	90%	84%	+6	92%	82%	+10
2021-2022	80%	76%	+4	78%	78%	0	87%	75%	+12	80%	77%	+3

**Legal Compliance**

Bedford Stuyvesant New Beginnings Charter School operates in accordance with applicable law, regulations, rules and other policies, including the terms of its charter, its by-laws, and other school-specific policies. The board holds meetings in accordance with the Open Meetings Law.

**Essential Question 3: Is the school financially viable?**

**Financial Condition**

The school has demonstrated financial viability as evidenced by performance on key indicators derived from the school’s independently audited financial statements.

The NYCDOE reviews the financial performance and management of charter schools using quantitative and qualitative methods. Near-term indicators, such as the current ratio and unrestricted days cash, are measures of liquidity and of the charter school’s capacity to maintain operations; none of these short-term indicators were below target in the last three fiscal years. Long-term indicators, such as total margin and debt-to asset ratio, are measures of the charter school’s capacity to remain viable and to meet financial obligations; none of these long-term indicators were below target in the fiscal years considered.<sup>2</sup>

**Financial Management**

The NYCDOE reviewed Bedford Stuyvesant New Beginnings Charter School’s audited financial statements from 2018-2019, 2019-2020, 2020-2021 and 2021-2022 to determine whether the independent auditor observed sufficient internal controls over financial reporting. The auditor did not identify any deficiencies in internal controls that could be considered material weaknesses in any of the aforementioned years.

<sup>2</sup> These rigorous indicators of fiscal soundness are aligned with those recommended by the National Association of Charter School Authorizers.



### **Summary of Public Comment**

The required public hearing was held by the New York City Department of Education on December 1, 2022. Forty-three people attended, and forty-one spoke. Thirty-nine were in favor of the renewal and revision. No one was opposed. Eight people submitted written comment, all in favor of the renewal and revision.